

USER INSTRUCTIONS

NRS EASYFIT BED RAIL

M76333

NRS Easyfit Bed Rail with Straps

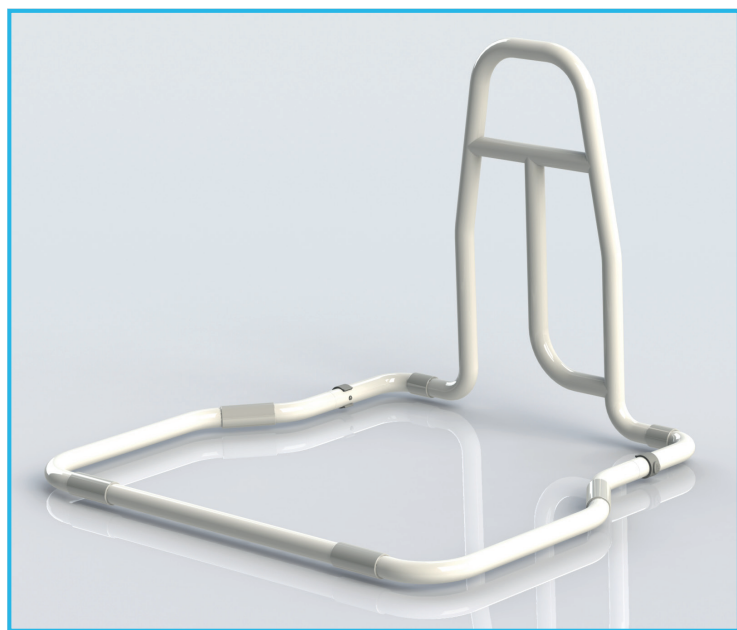
⚠ General Safety Warning ⚠

Please make sure that you read and follow these instructions carefully. Keep these instructions in a safe place for future reference.

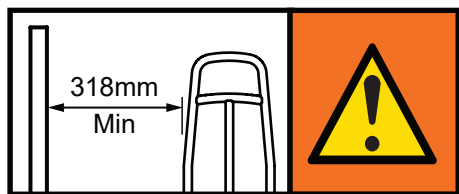
1. INTENDED USE

To provide stable support to aid adult users (taller than 1.46 m) transfer in and out of bed, moving from a lying to a sitting position as well as assist user repositioning.

Designed for use with domestic divan beds and framed beds.



2. SAFETY



WARNING: To avoid possible entrapment, you must always position the product a minimum of 318 mm from the headboard or footboard.

WARNING: To prevent additional entrapment hazards, we recommend that you install the product at least 318 mm away from any adjacent bedside furniture. Where this is not possible, the prescriber must do a risk analysis.

WARNING: The maximum user weight must not be more than 190 kg (30 st).

YOU MUST carry out a risk assessment to assess the use and suitability of the bed rail in relation to the users physical and cognitive ability, as well as the surrounding environment.

Maximum User Weight



DO NOT install this product to a damaged bed.

MAKE SURE there is no gap between the bed rail and the mattress.

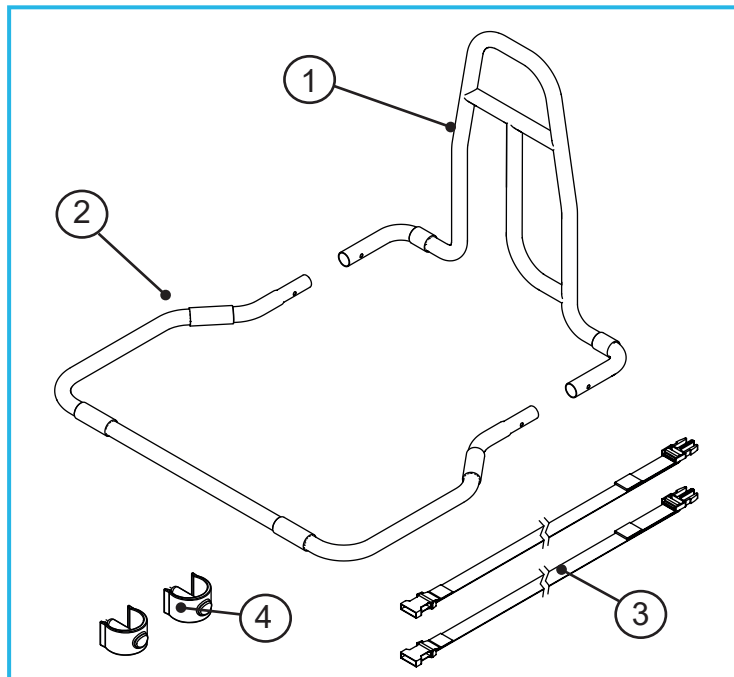
ALWAYS use the bed securing straps provided when fitting to a divan bed.

REGULARLY check the straps are tight and the device is stable and firmly fitted.

DO NOT fit this product to profiling or medical beds.

3. UNPACKING

Remove the packaging and check all parts carefully. Contact your supplier immediately if parts are missing or damaged and do not try and assemble.

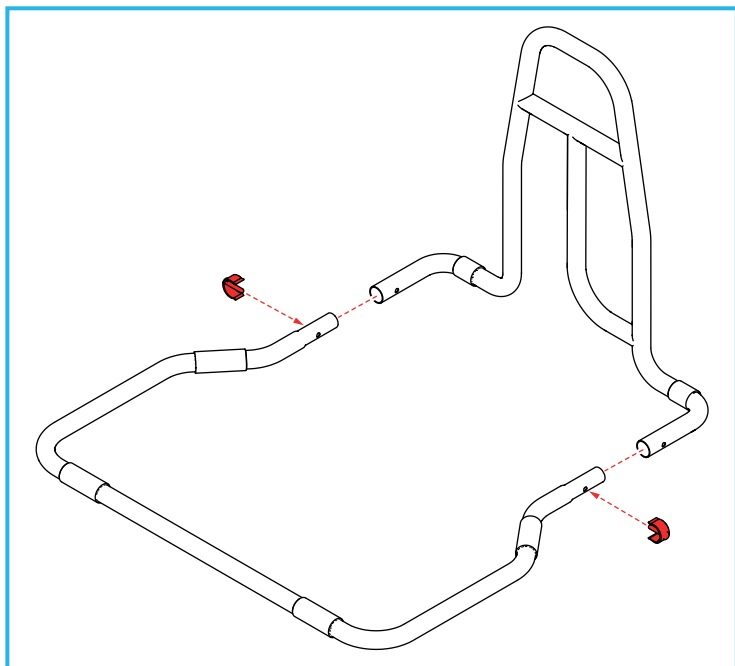


3.1 Contents

1. Bed Rail Handle x 1
2. Bed Rail Base x 1
3. E-clips x 2
4. Straps x 2

4. ASSEMBLY

4.1 Assemble the Bed Rail



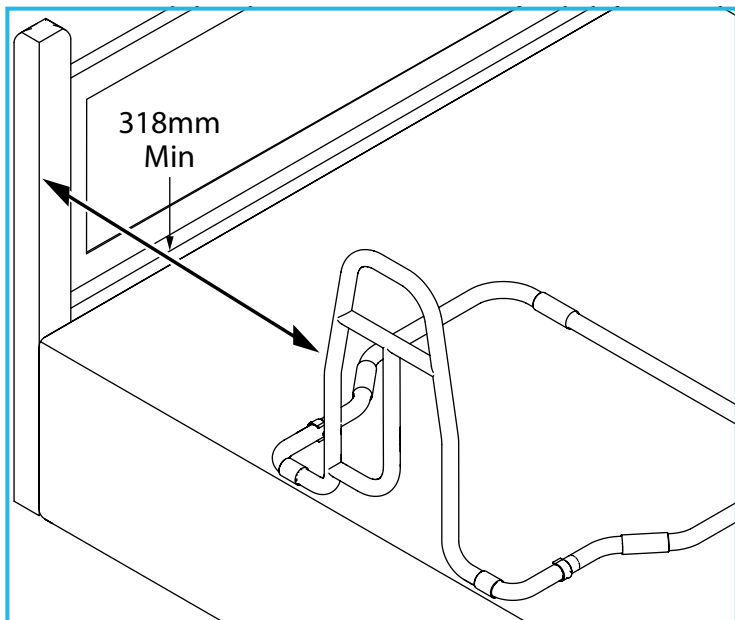
Slot the hand rail assembly onto the base assembly and secure with the two e-clips.

5. INSTALLATION

5.1 Fitting to a Divan Bed

WARNING: We strongly recommend that you use the straps provided. An unsecured bed rail could move causing risk of entrapment.

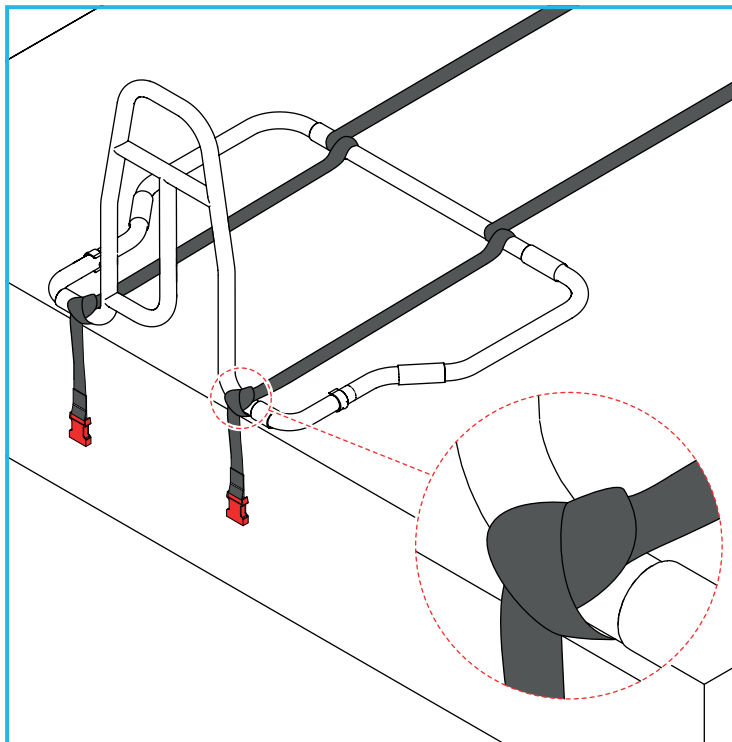
5.1.1 Position the Bed Rail



1. Remove the mattress and place the bed rail onto the base of the bed.
2. Position the bed rail so the user can reach the handle from a relaxed lying position without having to stretch.

WARNING: To avoid possible entrapment, you must always position the product a minimum of 318 mm from the headboard or footboard.

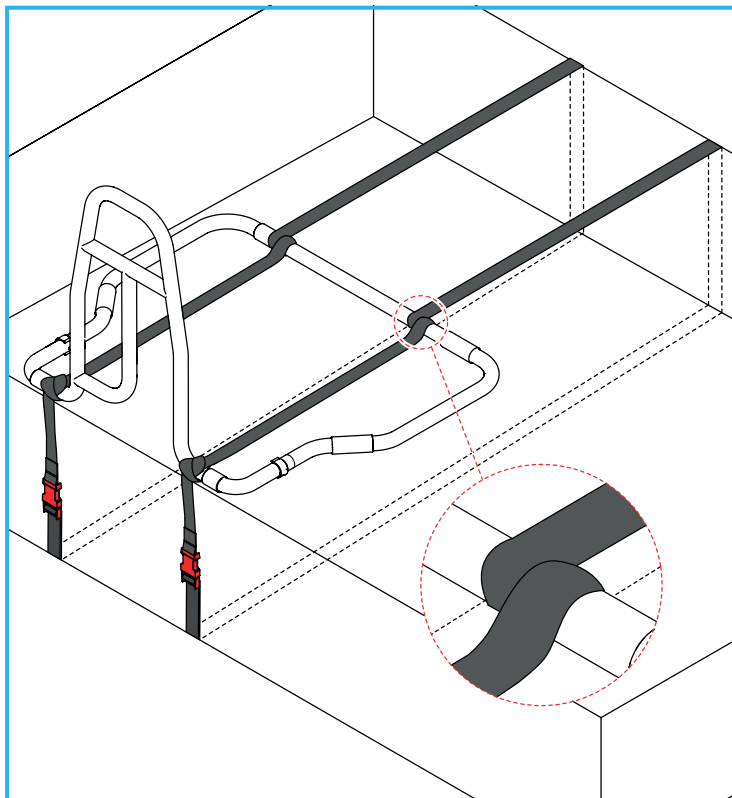
5.1.2 Fitting the Straps



With the first strap, tie a secure knot on the hand rail assembly in the position shown, then repeat for the opposite site with the second strap.

Note: The strap buckle should hang down the side of the bed between 50 to 75 mm.

5.1.3 Securing the Straps



1. Loop the first strap around the bed rail base in the position shown.
2. Feed the strap over the top of the bed and back underneath the base.

Note: To fit the strap under the divan base, take the strap to the end of the divan base, lift up the end of the divan base and feed the strap underneath the legs / castors.

3. Clip the two strap buckles together.
4. Pull down on the loose end of the strap to tighten.
5. Make sure the bed rail base is tight against the divan base.

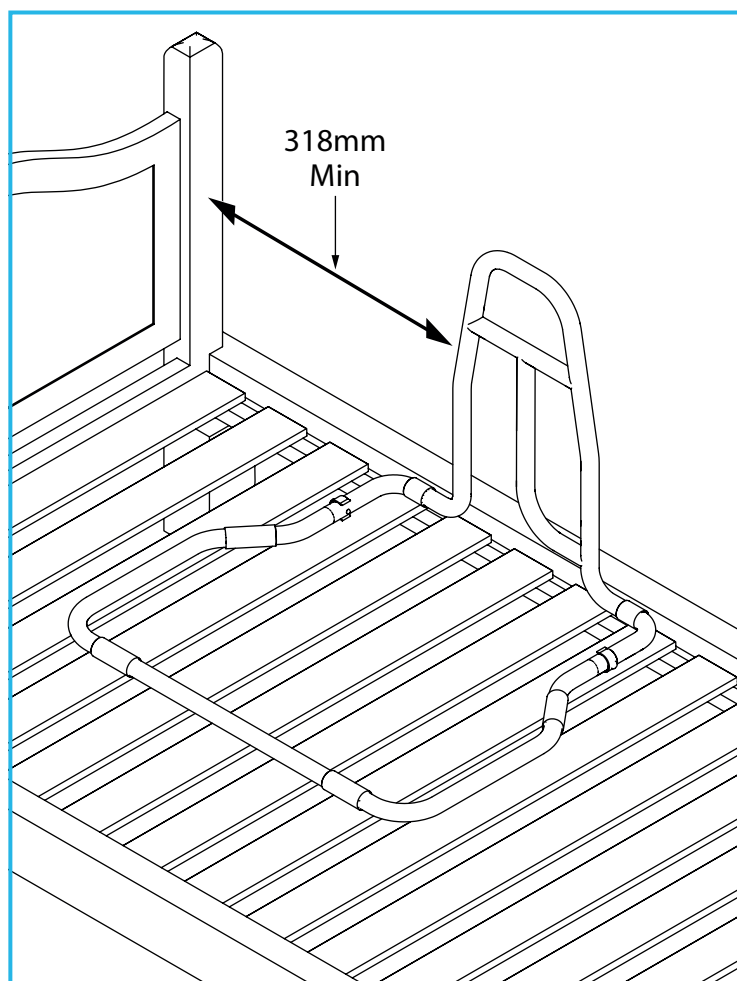
Note: To avoid tripping hazards, make sure you tuck away any loose strap ends.

6. Repeat for the second strap on the opposite side of the bed rail.
7. The bed rail should now be fully secured to the divan base.

5.2 Fitting to a Framed Bed with Fixed Slats

WARNING: We strongly recommend that you use the straps provided. An unsecured bed rail could move causing risk of entrapment.

5.2.1 Position the Bed Rail

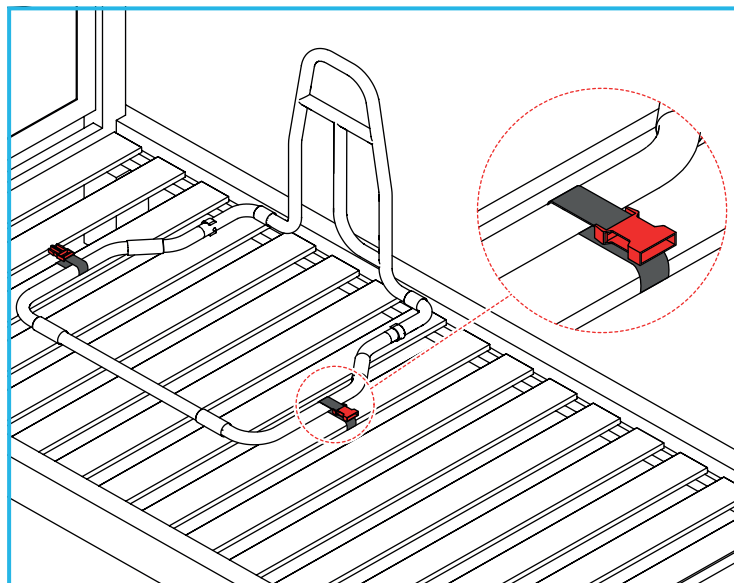


1. Remove the mattress and place the bed rail onto the base of the bed.
2. Position the bed rail so the user can reach the handle from a relaxed lying position without having to stretch.

WARNING: To avoid possible entrapment, you must always position the product a minimum of 318 mm from the headboard or footboard.

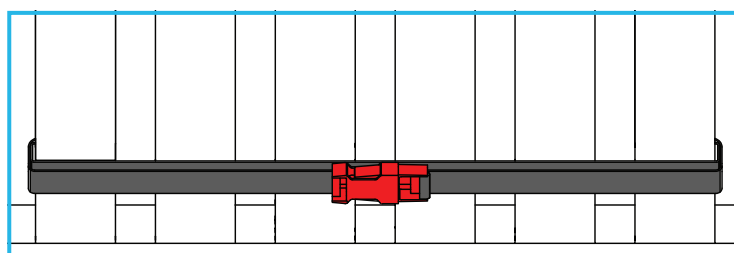
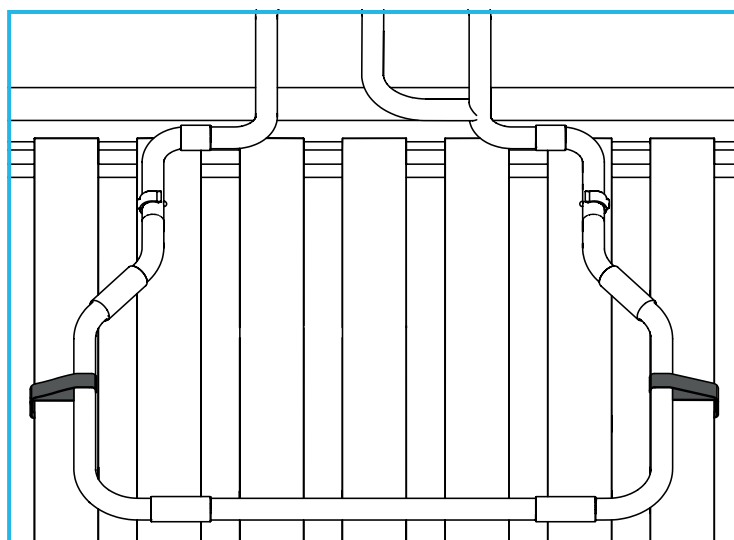
5.2.2 Fitting the Straps

Note: Do not use the straps on a bed with non-fixed slats (refer to Section 5.3).



1. Thread one end of the strap from under the bed up around the bed slat, then thread around the bed rail base as shown.
2. Repeat the step using the other end of the strap on the opposite side of the bed rail base.

5.2.3 Securing the Straps



Underside of the Bed

1. Pull both buckles so they meet in the middle on the underside of the bed, then clip together.
2. Pull down on the loose end of the strap to tighten.

Note: To avoid tripping hazards, make sure you tuck away any loose strap ends.

3. Make sure the bed rail is fully secure before replacing the mattress.

5.3 Fitting to a Framed Bed with Non-Fixed Slats

Note: Straps cannot be used on a bed with non-fixed slats.

Repeat the steps in section 5.2, but do not use straps.

6. CLEANING INSTRUCTIONS

6.1 Cleaning the Hand Rail & Base

Please check the suitability of the cleaning products before use. Do not use solvents, abrasive cleaners or cloths as these could permanently damage the surface and invalidate any warranty.

Clean the frame regularly, using a general purpose, neutral detergent and warm water.

To disinfect, wipe with a dilute bleach solution, and rinse thoroughly with fresh water.

Allow product to fully dry prior to use/storage.

6.2 Cleaning the Straps

Clean with sponge and warm soapy water, then rinse thoroughly with fresh water.

Allow product to fully dry before use/storage.

Do not use bleach or solvents.

7. MAINTENANCE

Note: The following checks should be carried out on a daily basis.

Check that all E-clips are fully inserted and that there is no excessive movement.

Check that straps are tight and the bed rail is correctly positioned (minimum of 318 mm from the headboard or footboard).

Make sure there is no gap between the bed rail and the mattress.

Inspect the product regularly for signs of wear or damage.

Any suspected faults or damage should be reported to the supplier immediately and the product taken out of use.

8. ACCESSORIES & SPARE PARTS

L75930: Bed Rail Strap

M84780: Slip Resistant Netting (white)

For more details please visit our website:

www.healthcarepro.co.uk or call Customer Services.

9. PRODUCT DISPOSAL

This product must be thoroughly cleaned/sterilised prior to disposal.

This product is manufactured from metal, plastic and fabric, and can be disposed of through Local Authority Household Waste and Recycling Centres or through Local Trade Waste Collectors.

10. PRODUCT GUARANTEE

NRS Healthcare guarantee this product for a period of 24 months, from the date of purchase, against faulty materials and workmanship.

This guarantee does not cover abuse, interference or tampering with any part of the products. Issues arising from fair wear & tear and customer misuse are not covered.

This guarantee covers domestic use only. If the product is used in commercial or semi-commercial settings such as care homes, schools, rental or communal accommodation etc, the guarantee is valid for one year only. Consumable parts are also guaranteed for one year only.

Any guarantee issued by NRS Healthcare does not affect your statutory rights.

If you have any problems with our products, please contact us at the address below.

If you have experienced an injury, contact us but feel free to contact the Medicines and Healthcare products Regulatory Agency at:

devices.regulatory@mhra.gov.uk



NRS HEALTHCARE Sherwood House,
Cartwright Way, Forest Business Park, Bardon
Hill, Coalville, Leicestershire, LE67 1UB, UK.



NRS HEALTHCARE 4C Altona Road, Blaris
Industrial Estate, Lisburn, Co Antrim,
Northern Ireland BT27 5QB

Tel: Customer Services: +44 (0)345 121 8111

Email: customerservice@nrshealthcare.co.uk

NRS Healthcare is a leading supplier of community equipment and daily living aids.

Please visit one of our websites to view our full range of products:

www.healthcarepro.co.uk or www.completecareshop.co.uk