

## Fitting and Operational Instructions – continued;

4 - Bring the external leg straps over the client's legs and thread the left external straps through the adjacent internal loop. Repeat for right leg.

5 - By pulling gently upwards on the external leg straps, it should be clear that the client's legs are fully enclosed by the Sling, with the straps crossed between the client's thighs. If this has not been achieved, undo the straps and go back to step 3 and repeat.

6 - Attach the shoulder straps to the hoist spreader bar. (The middle loop on each shoulder strap will give a reasonably upright sitting position.) A more reclined position can be achieved by using a longer loop. For a more upright posture choose a loop closer to the sling.

7 – To adjust the head support to provide the appropriate level of support. Feed the head support straps through the shoulder straps and back through the slider; feed the straps through the slider to secure. The position can be adjusted by tightening or loosening the strap.

NB: The head support straps should not be attached directly to the spreader bar as this may cause the sling to tear and put the client at risk.

8 - Attach the leg straps to the hoist spreader bar. The middle loop on each leg strap will give a reasonably natural sitting position. The client's knees can be raised by selecting a loop closer to the Sling.

9 - Ensure that the leg and shoulder loops are fully attached to the spreader bar, and that the sling is well positioned and not attached in any way to the seat or other obstacle.

10 - Ensure client is secure and comfortable.

11 - Raise the hoist spreader bar to lift the client just off the surface. Check that all loops are connected and the client is secure and comfortable prior to completing the transfer.

12 - Do not attempt to adjust or detach any strap while the patient is being hoisted.

### Fitting from the Lying position

Roll the client onto the sling, ensuring that the Bottom edge of the Head Support panel is level with the base of the neck, and the bottom edge is positioned just below the coccyx. Follow instructions from point 3 of the seated position instructions

### Nottingham Rehab Supplies

Clinitron House, Excelsior Road,  
Ashby Park, Ashby de la Zouch,  
Leicestershire, LE65 1JG  
United Kingdom

Tel: 0845 120 4522

Int'l: +44 (0) 1530 418378

Fax: 0845 121 8112




Email:

customerservice@nrs-uk.co.uk

**www.nrs-uk.co.uk**



# User Instructions Secure Fit Sling with Head Support - Range

Size	Small	Medium	Large
Colour Code			
Sling Code	M40351	M40363	M40375
Client Measurements Shoulder to Sacrum	400-550mm 15 <sup>3</sup> / <sub>4</sub> - 21 <sup>1</sup> / <sub>2</sub> "	550-700mm 21 <sup>1</sup> / <sub>2</sub> -27 <sup>1</sup> / <sub>2</sub> "	700-800mm 27 <sup>1</sup> / <sub>2</sub> -31 <sup>1</sup> / <sub>2</sub> "

### Maximum User Weight



### General Safety Warning

**Please ensure these instructions are fully read and implemented. Failure to do so may result in injury to the user. Retain in a safe place for future reference.**

**In the interest of safety; Persons using this equipment should have received appropriate training or instruction. Hoisting transfers should only be attempted following a comprehensive risk assessment and should be performed in accordance with local Moving & Handling Guidelines.**

### Intended Use

The Secure Fit, with Head Support Sling range is designed to suit a wide range of users and transfer needs, including bathing. They can be used on hoists fitted with a conventional spreader bar (i.e. with hooks at either end from which looped straps may be suspended)

If you are unsure about compatibility with the spreader bar contact NRS customer services, contact details overleaf.



## Cleaning Instructions:

**Note:** The head support stiffening bars (Positioned in the head support section of the sling) **MUST** be removed before the sling is washed.

- Machine wash warm at up to 70°C
- For effective decontamination, wash at greater than 65°C for at least 10 minutes
- Do not use bleach, biological detergents or detergents containing bleach.
- Do not spot clean with strong chemicals
- Do not iron.
- Do not dry clean
- Tumble dry only on 'cool' setting or air dry at very low temperatures.

## Inspection Information

The following notes are a guide to the recommended inspection procedures for slings.

If carried out thoroughly, at regular intervals, lifting and hoisting operations can be carried out with confidence, and the risk of injury due to sling failure is significantly reduced.

Before every lift, visually inspect the slings structural integrity. Use the diagrams as a guide. If there are any signs of damaged fabric or stitching do not use.

If you are unsure, do not use the sling, withdraw from service immediately. The product should then be either discarded, or clearly labelled:

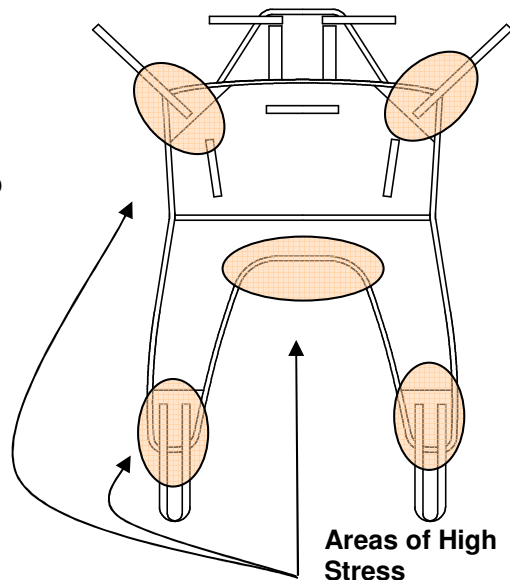
“Not for use” and assessed at the earliest opportunity by a competent individual.

## Sling Inspection procedure;

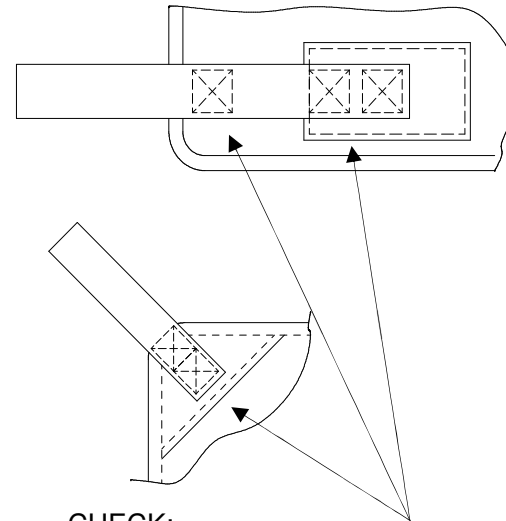
The following procedure is recommended to help ensure that lifting and hoisting operations can be carried out with confidence and the risk of accident due to sling failure is minimised.

- Open the sling out fully on a flat surface.
- Check all retaining straps for cuts, nicks or degradation of any kind.
- Carefully check all stitching.
- Check the material near to any attachment points.
- Pay particular attention to the areas of high stress as shown in diagrams.
- Checks should be carried out to both sides of the sling in the same manner.
- Discolouration may also indicate fabric degradation.

### CAREFULLY EXAMINE ALL STITCHING



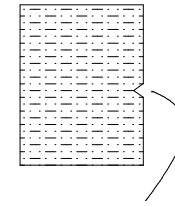
Areas of High Stress



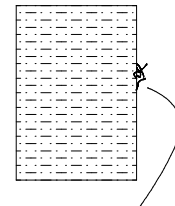
### CHECK:

- All Stitching **MUST** be intact.
- There should be no Material Degradation around stitching.

## STRAPPING INSPECTION



A visible nick – even of only 1mm **SHOULD BE DEEMED UNSAFE**



A few loose strands are **ACCEPTABLE**

## Fitting and Operational Instructions

**Before every lift, visually inspect the sling to ensure it is fit for purpose. Refer to the Inspection Routine section of this guide for the recommended method. If in doubt do not use the sling.**

**In the interest of safety; Persons using this equipment should have received appropriate training or instruction.**

**Hoisting transfers should only be attempted following a comprehensive risk assessment and should be performed in accordance with local Moving & Handling Guidelines.**

### Fitting from the seated position

1 - Place the Sling behind the client with the bottom edge of the head support panel level with the base of the client's neck.

2 - Position the sling by pulling the bottom edge briskly from left to right and back again, the bottom edge of the Sling can be positioned 25-50 mm under the client's buttocks.

3 - Pass the internal leg straps between the client's legs and thread the left loop through the right.