

Product Guarantee

NRS Healthcare guarantee this product for a period of 24 months, from the date of purchase, against faulty materials and workmanship.

This guarantee does not cover abuse, interference or tampering with any part of the products. Issues arising from fair wear & tear and customer misuse are not covered.

This guarantee covers domestic use only. If the product is used in commercial or semi-commercial settings such as care homes, schools, rental or communal accommodation etc, the guarantee is valid for one year only. Consumable parts are also guaranteed for one year only.

Any guarantee issued by NRS Healthcare does not affect your statutory rights.

The Plastic Fluted Grab Rail range is part of a range of over 3000 daily living aids available from NRS Healthcare.

To view the full range please visit our website.

NRS Healthcare, Sherwood House, Cartwright Way,
Forest Business Park, Bardon Hill, Coalville,
Leicestershire, LE67 1UB, United Kingdom.

Tel: Customer Services: +44 (0)345 121 8111
Email: customerservice@nrshealthcare.co.uk

NRS Healthcare is a leading supplier of community equipment and daily living aids.

Please visit one of our websites to view our full range of products:
www.healthcarepro.co.uk or www.completecareshop.co.uk



User Instructions Plastic Fluted Grab Rails

F19467 – 300 mm (12")

F19479 – 450 mm (18")

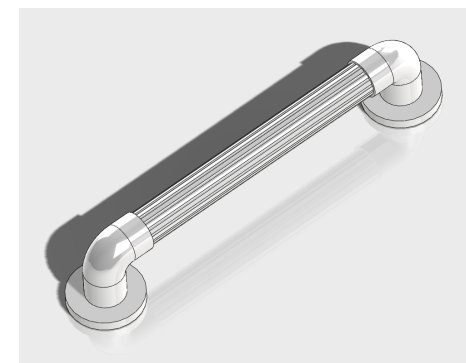
F19480 – 600 mm (24")

Maximum User Weight



General Safety Warning

Please ensure these instructions are fully read and implemented. Failure to do so may result in injury to the user. Retain in a safe place for future reference.



Intended Use

This NRS Plastic Fluted Grab rail range is recommended for all internal applications and are designed and tested to comply with BS EN 12182. They can be used on their own or part of a group of products which combine and complement each other to provide a safer environment for the user. Please refer to our website or

catalogue for product detail.
See back page for contact details.

Unpacking

Remove the product from its packaging.
Check for damage. If you see any, or suspect a fault, do not install the product; contact your supplier immediately.

Safety Precautions

- Fully read these instructions before installation and use.
- This Grab Rail must be correctly assembled, installed, and maintained.
- This product must be installed by a suitably qualified, competent person.
- Only install the product in an area where the mounting surface is structurally sound.
- Strengthening modifications to the fixing surface may be required.
- Only install this product with fixings matched to the grab rail, type of mounting surface and the loading conditions to be applied. NRS is unable to specify the type of fixing to use because of the vast number of possible types and surface condition to which the grab rail may be attached.
- The maximum load of this product is 95 kg (15 st) based on the product being fitted to a suitable surface using appropriate fixings and fitted by a competent person.
- Do not place matches or cigarettes on or near this product.

Installation General

- Before installation; consider the best place to position the rail, taking into account all activities it may be used for, e.g. sitting, standing or reaching.
- They are intended to be used to provide gripping or handle positions around doorways, stairwells, bathrooms and other similar applications.
- After the position of the rail is chosen for optimum use by the client, consider the structure of the wall and avoid any electric/plumbing behind the wall.
- Important; after installing the product, perform a final tighten and inspection of all fasteners.
- Test the installation by vigorously pulling on the rail. The rail should be rigid and stable.

Instructions for Use

- The grab rail is designed for general domestic use as an aid to the movement of a person about a normal dwelling.
- The grab rail must only be used for the tasks it is intended to perform. Do not use it to tie or hang objects from or to secure items to, as this may have serious detrimental effects on its performance and safety.

Care & Maintenance

- Inspect the stability and rigidity of the product on a regular basis.
- Check all screws are tightened and in good condition.
- Any rails showing signs of damage or misuse must be replaced.

Specification

This product is designed for a single location installation.

Max* weight capacity 95 kg (15 st)
* Weight capacity only refers to the rail, not to the fixings or retention in the mounting surface.

Length:
F19467 – 300 mm (12")
F19479 – 450 mm (18")
F19480 – 600 mm (24")

Cleaning

- The grab rail should be cleaned periodically using normal domestic cleaning materials.
- After cleaning always rinse with water and wipe thoroughly with a damp cloth to remove any cleaning material residue.
- Do not use strong or concentrated acidic, alkaline or other cleaning materials which may damage or discolour the rail.
- Where disinfecting is required use a mild detergent /disinfectant solution.
- Do not use abrasive cleaners.

Packaging

- The product is individually packed to prevent it from becoming soiled before use; it may also be supplied bulk-packed in an NRS branded cardboard carton. Both are suitable for recycling and should be disposed of in accordance with local recycling regulations.