

User Instructions

Sanctuary Commode



Sanctuary Commode S60171















**Read and follow these instructions carefully. Failure to do so can result in injury.
Keep these instructions in a safe place for future reference.**

Intended Use

For use as a day chair with a built-in commode, suitable for ambulant and semi-ambulant users. Use the chair in bedrooms or lounge areas, but not wet-rooms or bathrooms.

Symbols

Symbols used on the product and in these instructions.

	Manufacturer		Batch Reference Code		Consult the instructions for use
	Item/Catalogue number		Important Note		Recycling Symbol
	Maximum User Weight		Warning		Medical Device
	European Conformity / Conformité Européenne		UK conformity assessed marking		Authorised representative in the European Community

Safety



Do not exceed the maximum user weight of 160 kg (25 st).



Inspect the product before use. Contact the service provider if you see any damage.

Keep away from sources of heat, such as fire and cigarettes.

Wipe clean after every use.

Do not:

- Use in wet areas such as bathrooms or wet-rooms.
- Stand on the chair or sit on the armrests.
- Lean back on the seat.

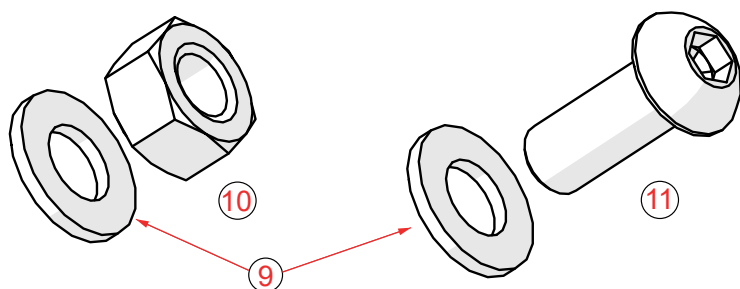
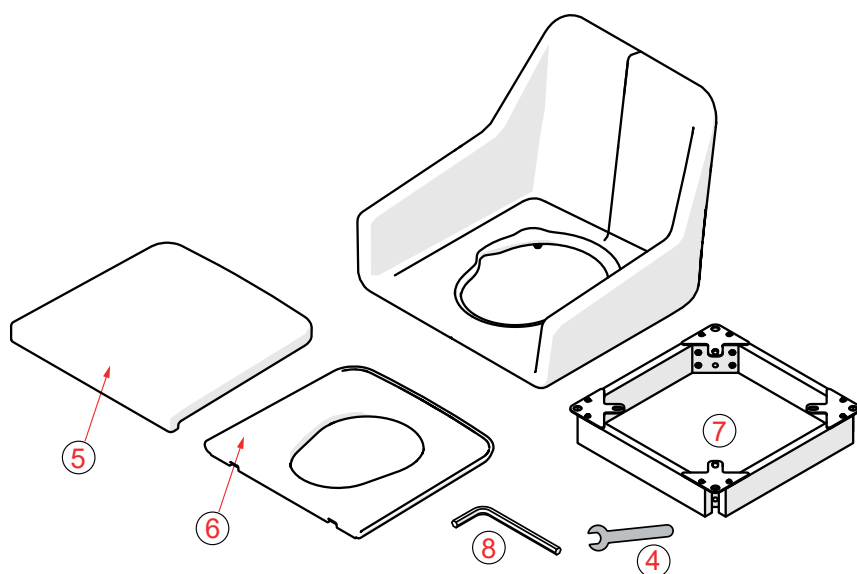
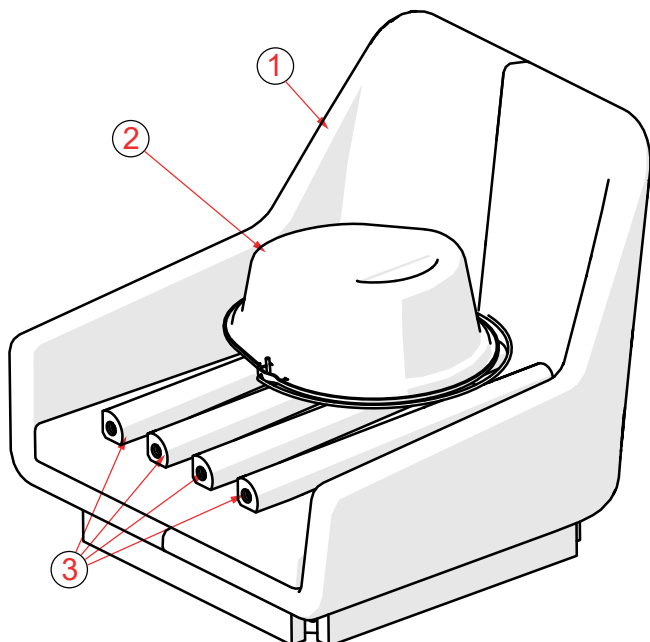
Unpacking

Remove the packaging and check all parts carefully.



Contact your supplier immediately if parts are missing or damaged. Do not try to assemble.

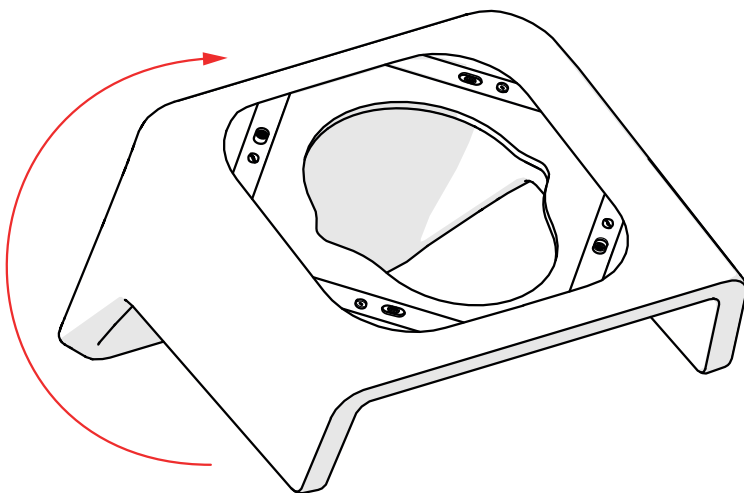
Contents



1. Chair Assembly
2. Potty
3. Legs x 4
4. Spanner
5. Vanity Cushion
6. PU Seat
7. Wooden Base Frame Assembly
8. Hexagon Tool
9. Plain washer x 12
10. Hexagon Nuts x 8
11. Socket Head Screw x 4

Assembly/Installation

1

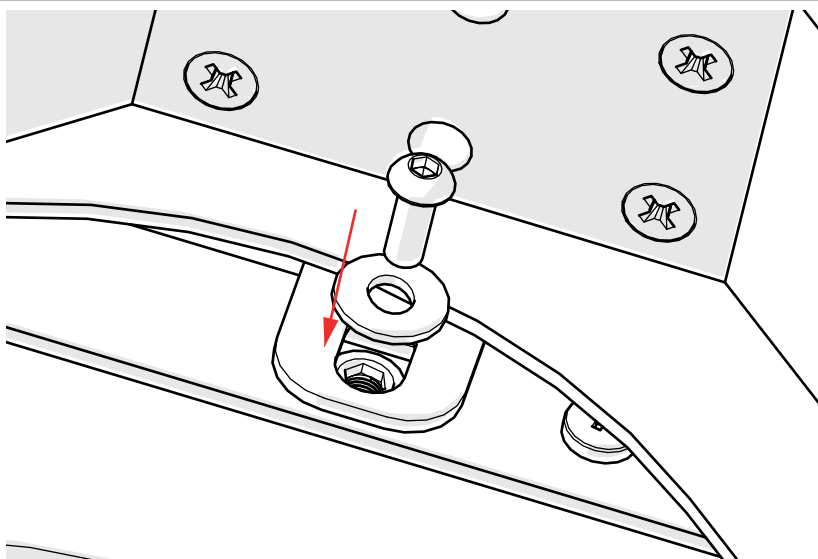
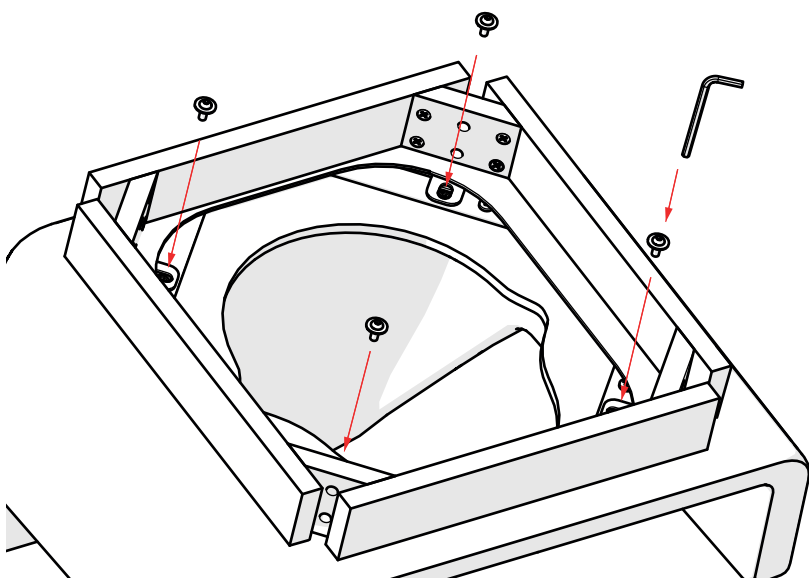


Lift all other parts off the chair and carefully put the Chair Assembly upside down on a clean floor or work surface.



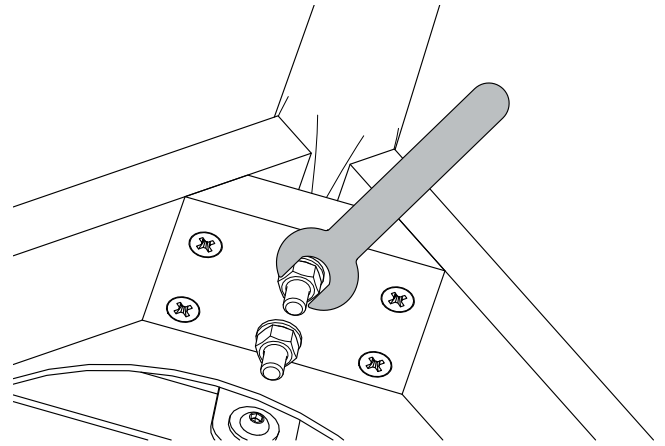
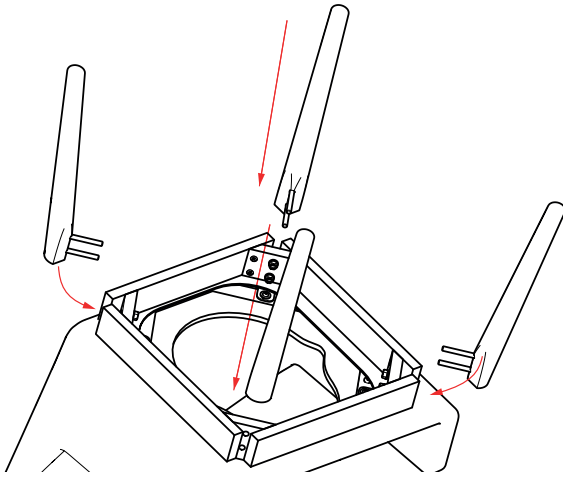
Take care not to damage the chair as you put it upside down.

2



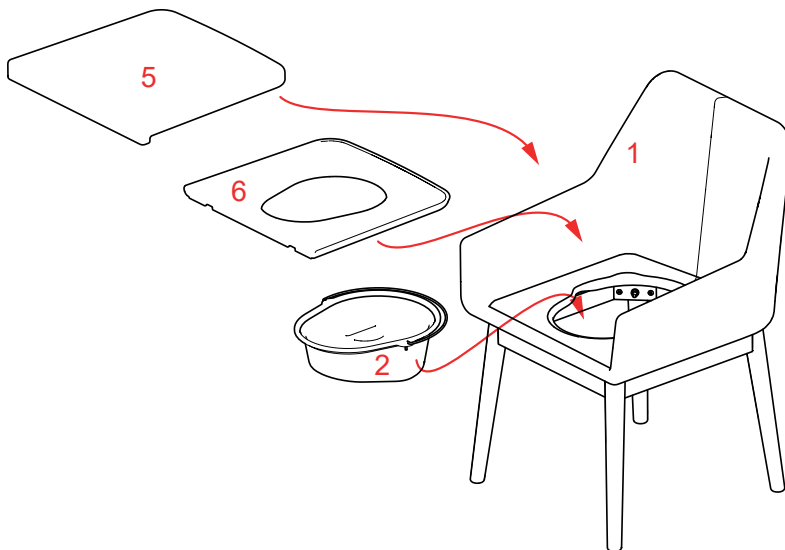
Use the Hexagon Tool to attach the Wooden Base Frame Assembly to the chair. Use the four Socket Head Screws and large Plain Washers.

3



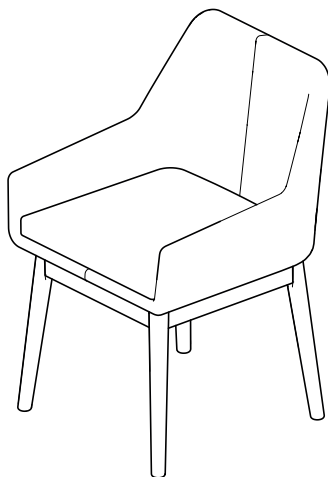
Use the spanner to attach the four legs using the two washers and two nuts on each leg.

4



Lift the chair to its upright position.
Fit the Potty, PU Seat, then Vanity Cushion.

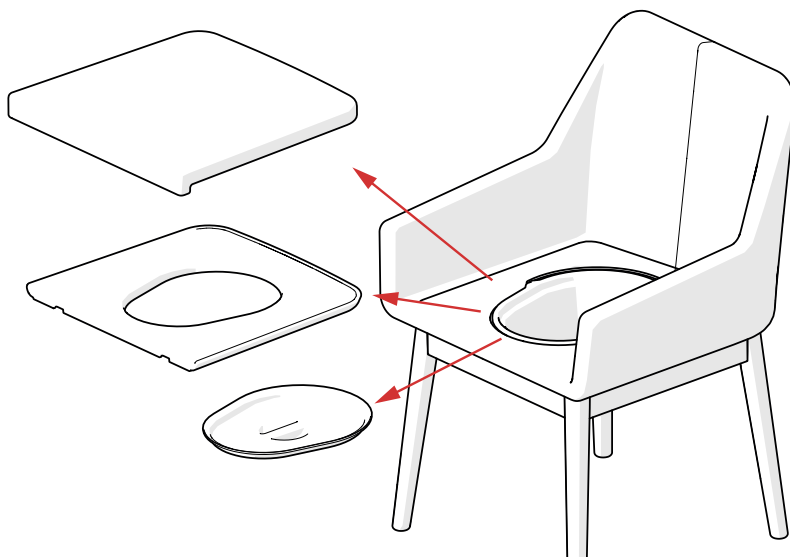
5



Commode fully assembled.

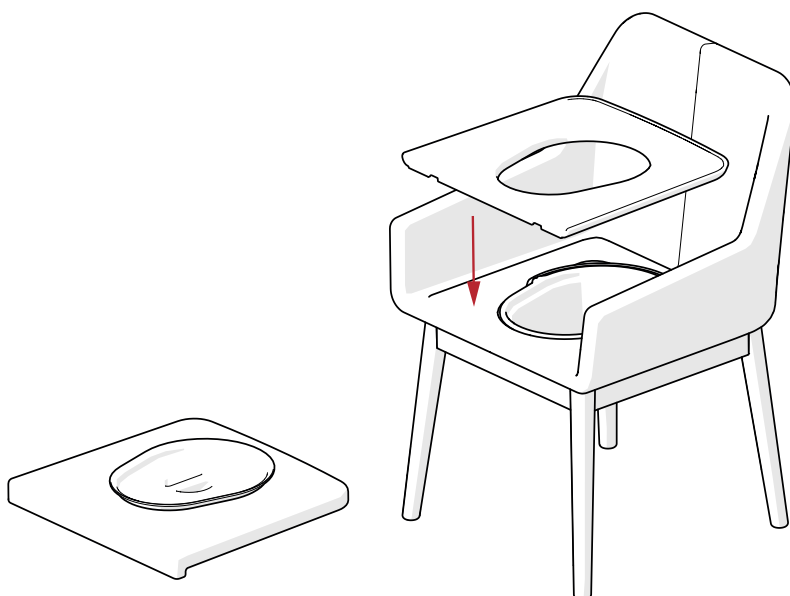
To Use the Commode

1



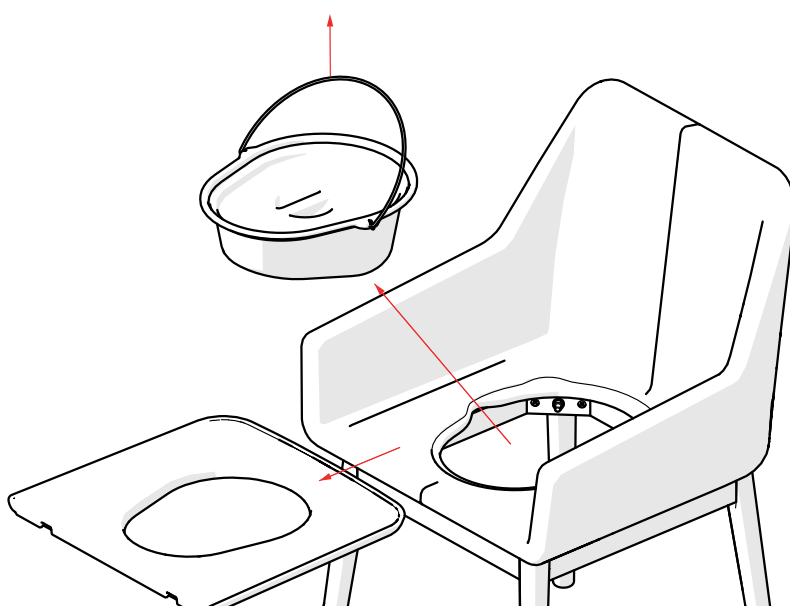
Lift off the Vanity Cushion, PU Seat and Potty Lid.

2



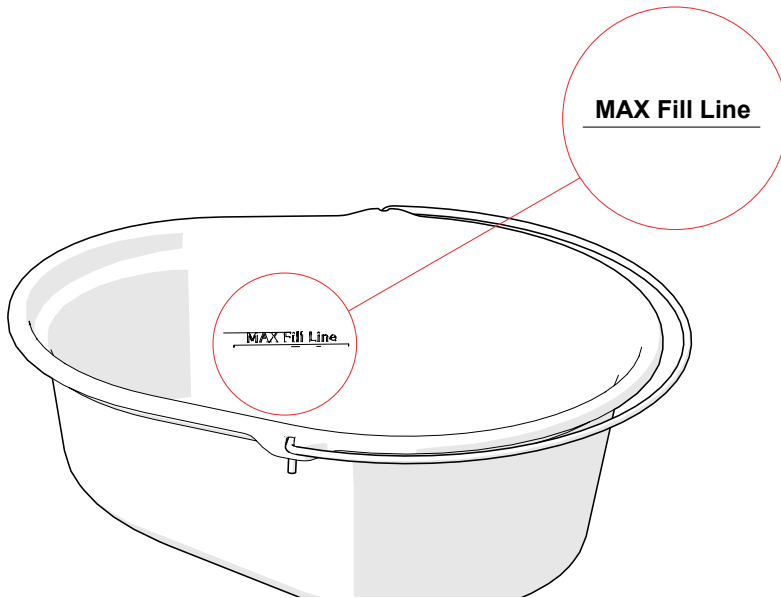
Refit the PU Seat.

3



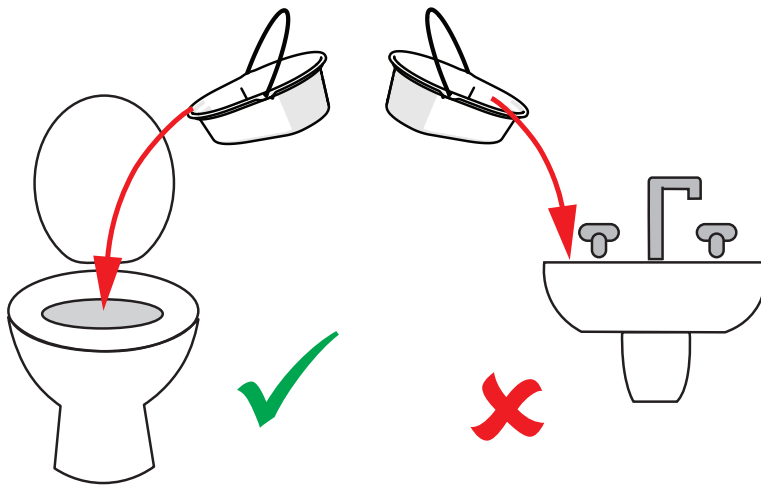
After use:
Lift off the PU Seat and clean if necessary.
Put the lid back on the potty and use the wire handle to carry the potty away for emptying and cleaning.

4



Note Maximum Fill Line.

5



Dispose of potty contents correctly.

Maintenance

Inspect the product at regular intervals and before re-use for signs of general wear or damage. Report to the supplier any suspected faults or damage and take the product out of use immediately. Check the fixings at regular intervals.

Cleaning

Clean regularly using a general purpose, neutral detergent and warm water. Check the suitability of the cleaning product before use. Do not use abrasive cleaners or cloths as these could permanently damage the surface and invalidate any warranty.

To disinfect, wipe with a dilute bleach solution, and rinse thoroughly with fresh water.

Allow product to fully dry before using and storage.

Accessories & Spare Parts

- S38220 Spare PU Seat
- S38219 Potty Kit Spare

For more information, see the end of this document for our contact details.

Product Disposal

Thoroughly clean this product before disposal and recycle where possible.

This product is made of wood, metal, polyurethane and plastic. It can be disposed of through Local Authority Household Waste and Recycling Centres or through Local Trade Waste Collectors.



Recycle any cardboard packaging.

Product Guarantee

NRS Healthcare guarantee this product for a period of 24 months, from the date of purchase, against faulty materials and workmanship.

This guarantee does not cover abuse, interference or tampering with any part of the products. Issues arising from fair wear & tear and customer misuse are not covered.

This guarantee covers domestic use only. If the product is used in commercial or semi-commercial settings such as care homes, schools, rental or communal accommodation etc, the guarantee is valid for one year only. Consumable parts are also guaranteed for one year only.

Any guarantee issued by NRS Healthcare does not affect your statutory rights.

If you have any problems with our products, please contact us. See the end of this document for our contact details.

If you have experienced an injury, contact us but feel free to contact the Medicines and Healthcare products Regulatory Agency at: devices.regulatory@mhra.gov.uk.

We are a leading supplier of community equipment and daily living aids.

Please visit one of our websites to see our full range of products.



NRS HEALTHCARE 4C Altona Road,
Blaris Industrial Estate, Lisburn, Co Antrim,
Northern Ireland BT27 5QB



NRS Healthcare. Sherwood House,
Cartwright Way, Forest Business Park,
Bardon Hill, Coalville, Leicestershire,
LE67 1UB, UK

Email: exportsales@nrshealthcare.co.uk

Tel: +44 (0)345 121 8111

Email: customerservice@nrshealthcare.co.uk

Web: www.healthcarepro.co.uk

or www.completecareshop.co.uk