



Repose® Mattress Overlay

Order Code: 6101100

Repose® Cushion

Order Code: 6201100

Repose® Mattress Overlay & Cushion Set

Order Code: 6121100

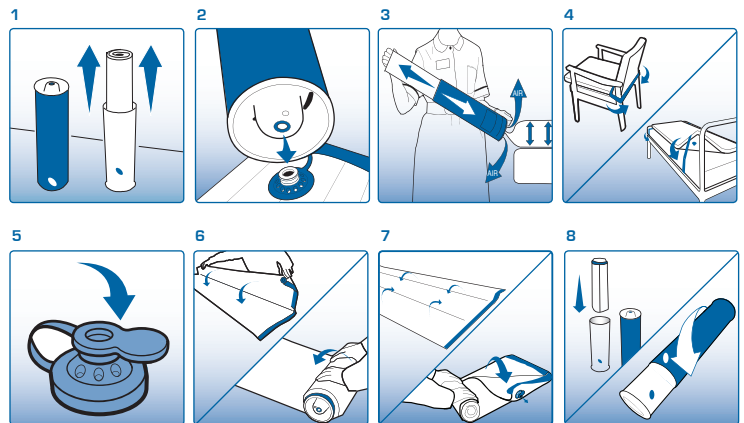


An effective aid in the prevention and treatment of pressure ulcers

Repose is an effective aid in the prevention of pressure ulceration for all patients including those assessed as very high risk, and for the treatment of existing category 1 and 2 pressure ulcers. Clinical supervision is advised if damage is severe.

To Inflate

- 1 Remove Repose from the tube, refit the two tubes together to form a pump
- 2 Connect the valve on the pump to the valve on the device - Push to fit
- 3 Inflate Repose until you hear air exhausting from the pump valve. Discontinue pumping and wait until you no longer hear air escaping
- 4 Cover the valve on the device using the solid end of the valve cap. Turn over with valve underside and away from patient. Secure with straps



To Deflate

- 5 Insert the open end of the valve cap into the device valve. Air can now escape
- 6 Fold and roll up the device starting at the point furthest away from the valve until all air is expelled. Clean and allow to dry
- 7 Re-fold, and re-roll as tightly as possible
- 8 Replace device into the pump. Refit the two tubes together and rotate outer tube until it clicks closed

Please note, Repose is not suitable for the following:

- Persons weighing in excess of 139kg
- Persons with unstable spinal fractures
- Where body shape is such that the person cannot be fully supported by the Mattress or Cushion



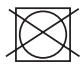

The Repose Mattress Overlay is suitable for use on top of a bed or trolley mattress. Use side rails in accordance with manufacturers instructions and appropriate risk assessment.

Check device daily to ensure proper inflation level. In case of doubt, repeat inflation procedure with the user off the product.

Keep away from babies, small children and pets. Avoid contact with heat and sharp objects

If deterioration in skin condition is noted, seek clinical advice

REPOSE CAN BE CLEANED AND REUSED

 WIPE CLEAN	 DO NOT DRY CLEAN	 DO NOT TUMBLE DRY	 DO NOT IRON
---	---	--	--

REPOSE CAN BE CLEANED WITH SOAP OR DETERGENT AND WATER AND CAN BE DISINFECTED IN ACCORDANCE WITH THE INFECTION CONTROL POLICY FOR STANDARD MATTRESSES. ALCOHOL & PHENOL BASED DISINFECTANTS SHOULD NOT BE USED. ALLOW TO DRY BEFORE USE OR STORAGE. REPOSE IS SUPPLIED WITH A MANUFACTURERS WARRANTY FOR 12 MONTHS FROM DATE OF DISPATCH.

IMPORTANT NOTICE
CHECK PRODUCT DAILY TO ENSURE CORRECT INFLATION LEVEL IN CASE OF DOUBT, REPEAT PUMPING PROCEDURES WITH THE PATIENT OFF THE PRODUCT

CE KEEP AWAY FROM DIRECT HEAT AND SHARP OBJECTS



www.frontiermedical.eu
01495 235800