

M10229

Garden Kneeler & Seat (with pouch)

⚠ General Safety Warning ⚠

Please make sure that you read and follow these instructions carefully. Keep these instructions in a safe place for future reference.

Maximum User Weight



1. INTENDED USE

The Garden kneeler provides both a comfortable kneeling and sitting position when carrying out tasks at, or around, floor level. The sturdy arms are designed to assist rising from a kneeling and sitting position. The product is lightweight and folds away for easy storage.



2. SAFETY

WARNING: The maximum user weight must not be more than 100Kg (16st).

MAKE SURE both handles of the kneeler are fully locked in position before use.

ALWAYS place the kneeler on level, solid ground.

ALWAYS use the centre part of the handle to raise yourself up to a standing position.

3. UNPACKING

This product is delivered fully assembled in the folded position.



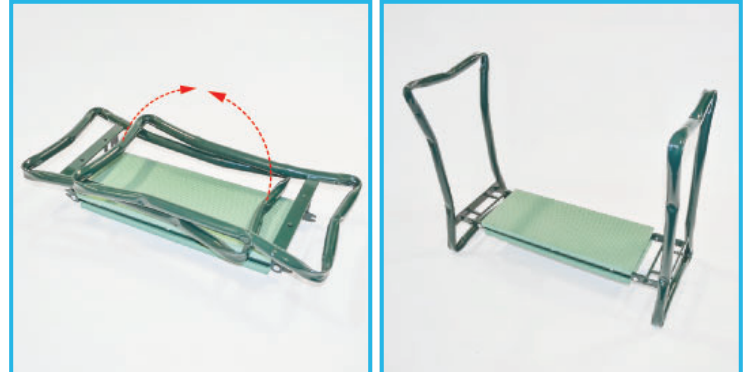
Remove the packaging and check all parts carefully. Contact your supplier immediately if parts are missing or damaged and do not try to use.

3.1 Contents:

1. Garden Kneeler x 1
2. Storage Pouch x 1

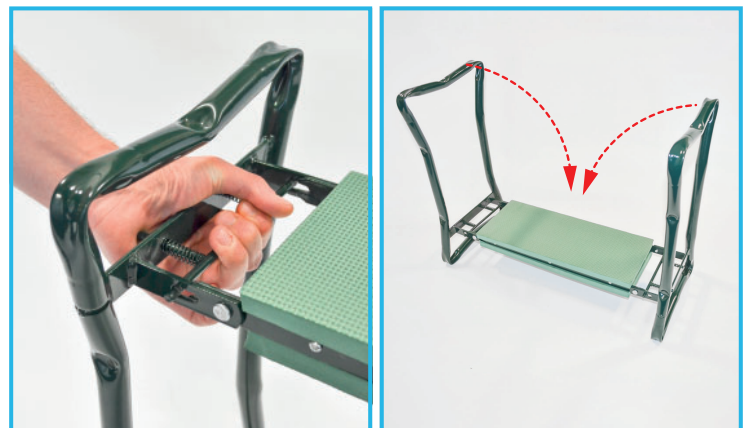
4. ASSEMBLY/INSTALLATION

4.1 Unfolding the Product:



Unfold the legs until they click into the locked position.

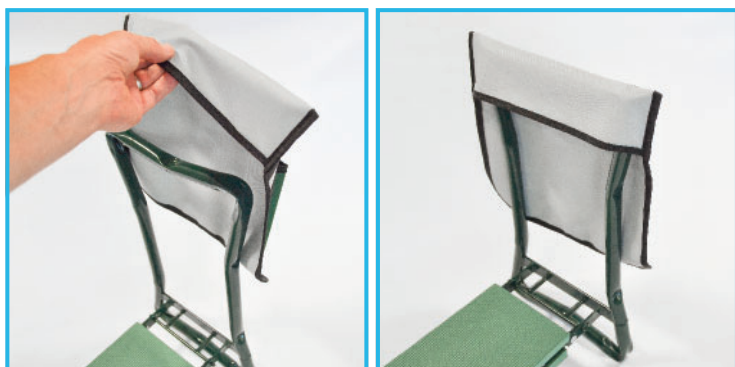
4.2 Folding the Product:



Unlock the legs by squeezing the sprung loaded locking handles at either end, then fold the legs inward.

4.3 Fitting the Storage Pouch

Note: The pouch can be fitted facing inward or outward, and in the kneeling or sitting position.



Slip the pouch over the end of the handle.

5. MAINTENANCE

Regularly check that all fastenings and fixings are fully secure.

Regularly check that the product is not damaged. If damage is found, stop using the product immediately.

6. CLEANING INSTRUCTIONS.

6.1 Frame & Seat Cleaning

Please check the suitability of the cleaning products before use. Do not use abrasive cleaners or cloths as these could permanently damage the surface and invalidate any warranty.

Clean regularly using a general purpose, neutral detergent and warm water.

Allow product to fully dry prior to use/storage.

6.2 Storage Pouch Cleaning

Clean with a sponge and warm soapy water.

Do not use bleach or solvents.

Do not steam clean, tumble dry or dry clean.

Allow product to fully dry prior to use/storage.

7. PRODUCT DISPOSAL

This product must be thoroughly cleaned/sterilised prior to disposal.

This product is manufactured from metal and plastic and can be disposed of through Local Authority Household Waste and Recycling Centres or through Local Trade Waste Collectors.

8. PRODUCT GUARANTEE

NRS Healthcare guarantee this product for a period of 12 months, from the date of purchase, against faulty materials and workmanship.

This guarantee does not cover; abuse, misuse, interference or tampering with any part of the product.

Any guarantee issued by NRS Healthcare does not affect your statutory rights.

NRS HEALTHCARE Sherwood House, Cartwright Way, Forest Business Park
Bardon Hill, Coalville, Leicestershire, LE67 1UB, UK.

Tel: Customer Services: 0345 121 8111

Email: customerservice@nrshealthcare.co.uk

NRS Healthcare is a leading supplier of community equipment and daily living aids.
Please visit one of our websites to view our full range of products:
www.healthcarepro.co.uk or www.completecareshop.co.uk