

USER INSTRUCTIONS

FOLDING EASYFIT BED RAIL

P42809

Folding EasyFit Bed Rail

⚠ General Safety Warning ⚠

Please make sure that you read and follow these instructions carefully. Failure to do so can result in injury. Keep these instructions in a safe place for future reference.

1.0 INTENDED USE

The Folding EasyFit Bed Rail gives the user stable support when getting in and out of bed and helps to move from a laying to a sitting position. This product is suitable for all sized divan and slatted beds and can be fitted to either side of the bed.



Figure 1: Bed Rail (RHS Installation)

2.0 SAFETY

Warning: The bed rail handle must be positioned at least 320mm (12.5") away from the headboard.

Warning: Refer to Figure 1. The bed rail handle must be angled away from the headboard.

The maximum user weight must not be greater than 20st / 127kg.

The position of the bed rail should ideally be based on a clinical assessment.

The bed rail must always be positioned as close as possible to the mattress, to prevent user entrapment.

Do not fit this product to profile adjustable beds.

Not suitable for use by children.

3.0 UNPACKING

Remove the packaging and check all parts carefully. Contact your supplier immediately if parts are missing or damaged and do not try and assemble.

Maximum User Weight

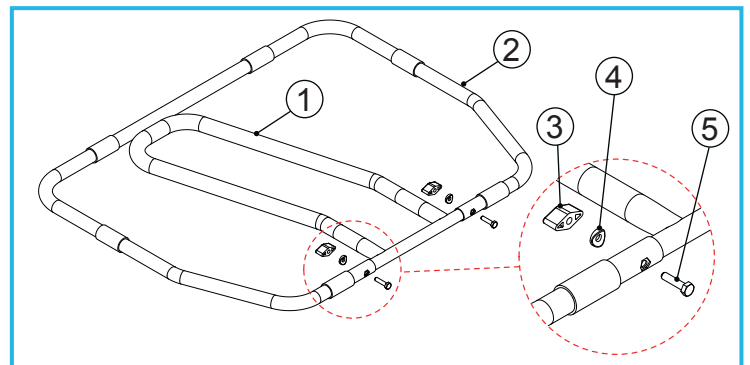


Figure 2: EasyFit Bed Rail Assembly

3.1 Contents

Note: The Folding EasyFit Bed Rail is supplied pre-assembled in the folded position.

1. Bed Rail Handle
2. Bed Rail Base
3. Plastic Wing-Nuts x 2
4. Plastic Saddle-Washers x 2
5. Steel Bolts x 2

4.0 ASSEMBLY

Refer to Figure 2. The bed rail handle (1) can be rotated in both directions, please make sure it is in the correct position for your installation.

1. Unscrew the two plastic wing-nuts (3), then remove the two plastic saddle-washers (4) and the two bolts (5).

4.1 Right-Hand Side Assembly

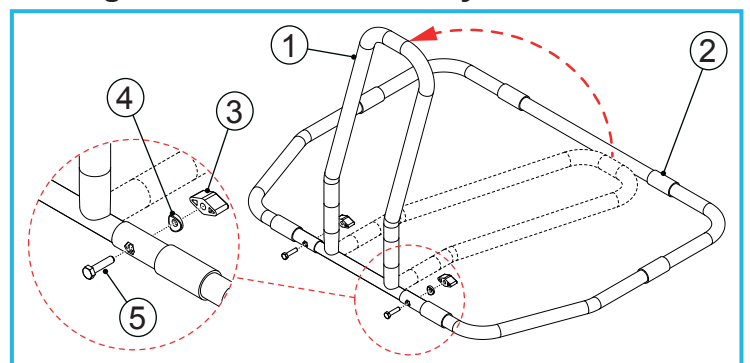


Figure 3: RHS Assembly

1. Refer to Figure 3. Position the bed rail base (2) as shown.
2. Rotate the bed rail handle (1) 90 degrees.
3. Insert the bolts (5) into the holes, making sure they locate fully into the hexagonal recess.
4. Replace the two saddle-washers (4) and secure with the two plastic wing-nuts (3).
5. Make sure the bed rail handle (1) is fully secure before installing to the bed.

4.2 Left-Hand Side Assembly

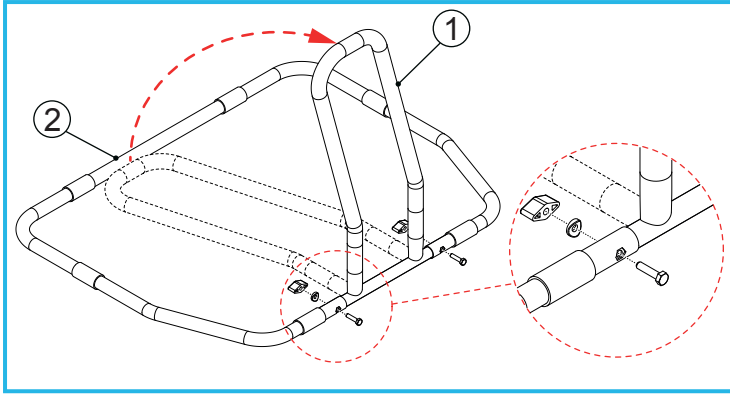


Figure 4: LHS Assembly

1. Refer to Figure 4. Position the bed rail base (2) as shown.
2. Rotate the bed rail handle (1) 90 degrees.
3. Refer to Section 4.1. Repeat steps 3 to 5.

5.0 INSTALLATION

Note: The following steps may require two people.

1. Lift the mattress and slide the bed rail between the bed base and the mattress.

Warning: Make sure that the bed rail is a minimum of 320mm (12.5") away from the headboard.

2. Replace the mattress, making sure there is no gap between the bed rail and the mattress.
3. Check the user position. If the user is unable to reach the handle, from a laying position, without stretching, repeat steps 1 and 2 until correct.

6.0 CLEANING

1. Clean regularly using a general purpose, neutral detergent and warm water.

2. To disinfect, wipe with a dilute bleach solution and rinse with fresh water.

Note: Please check the suitability of the cleaning products before use. Do not use abrasive cleaners or cloths as these could permanently damage the surface and invalidate any warranty.

3. Allow the product to dry fully before use or storage.

7.0 MAINTENANCE

1. Inspect the product for signs of wear or damage at regular intervals.
2. Check the wing-nut tension at regular intervals.
3. Any suspected faults or damage must be reported to the supplier and the product taken out of use immediately.
4. Check that there is no gap between the bed rail and the mattress.

8.0 ACCESSORIES & SPARE PARTS

P43062 (2 x Plastic Wing-Nuts, 2 x Plastic Saddle-Washers & 2 Steel Bolts).

For more details please visit our website: www.nrshealthcare.co.uk or call Customer Services.

9.0 PRODUCT DISPOSAL

This product should be thoroughly cleaned prior to disposal.

This product is manufactured from metal and plastic and can be disposed of through Local Authority Household Waste and Recycling Centres or through Local Trade Waste Collectors.

10.0 PRODUCT GUARANTEE

NRS Healthcare guarantee this product for a period of 12 months, from the date of purchase, against faulty materials and workmanship.

This guarantee does not cover; abuse, misuse, interference or tampering with any part of the product.

Any guarantee issued by NRS Healthcare does not affect your statutory rights.



NRS HEALTHCARE Sherwood House, Cartwright Way, Forest Business Park, Bardon Hill, Coalville, Leicestershire, LE67 1UB, UK.

Tel. Customer Services: 0345 121 8111

Email: customerservices@nrshealthcare.co.uk

NRS Healthcare is a Leading Supplier of Community Equipment and Daily Living Aids, to view our full range, visit our website:

www.nrshealthcare.co.uk

P42809-UI-3