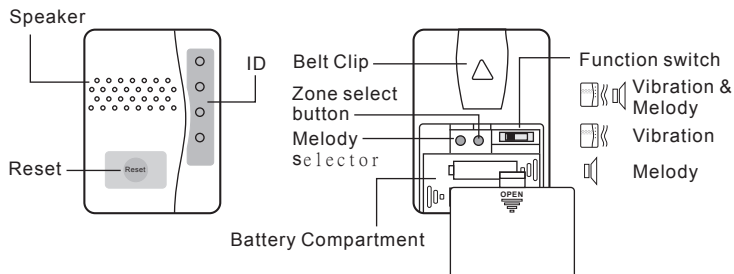


# Wireless Bathroom Pull Alarm

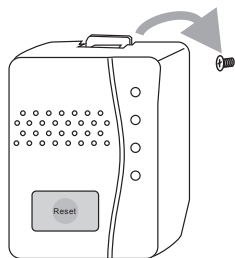
DCX-25  
LA140

## RECEIVER USER MANUAL

### PARTS & FUNCTION



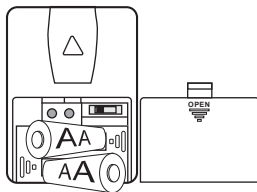
### MOUNTING



Hang on the wall

### POWER

1. Slide to open the battery cover
2. Insert 2 AA batteries
3. Close the battery cover.



Using 2 x AA size Battery

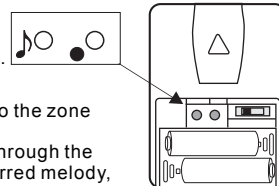
Please replace batteries by making sure the batteries match the correct polarity +/- markings and always replace with the same standard batteries.

### CODE MATCHING & TUNE SELECTION

Step 1: Insert batteries to the transmitter to be used e. g. door bell.

Step 2: Insert batteries to the receiver to be used (chime unit).

Step 3: Enter pairing mode for receiver (pager unit). Press and hold the zone select button ● for 3 seconds. The LED #1 will flash.



Step 4: Press the ● button again to move to the zone you wish to pair with. Press ♪ melody selector to scroll through the melodies. Once you hear your preferred melody, do not press ♪ again as it is now selected.

Step 5: Once the zone and melody are selected with the zone icon flashing, trigger the transmitter once to pair. If successful, the receiver will generate a short tone. Press the ● button to exit pairing mode, the system is ready to use.

To stop the vibration whilst the receiver is altering, press the reset button

### Clear the transmitter on the Receiver memory

First, press and hold the ● button for 3 seconds to enter the pairing mode. Press the ● button to move to the zone which is to be deleted. Press and hold the ♪ and ● buttons together for 3 seconds. The receiver will generate a tone to indicate the transmitter on this zone has been deleted.

### Change the melody in desired zone

First, press and hold the ● button for 3 seconds to enter the pairing mode. Press the ● button to move to the zone then press the ♪ button to select the melody required. Press the ● button until the pairing mode is exited.

### BATTERY LOW INDICATOR

If a zone LED light is blinking, it indicates that the battery is low for this transmitter. You must replace the battery as soon as possible. If the Receiver beeps every 5 seconds, this indicates the Receiver batteries are low. You must replace the batteries of the Receiver

PAROH LTD B24 9FD  
[www.paroh.co.uk](http://www.paroh.co.uk)  
Made in China



The crossed wheellie bin symbol reminds you of your obligation to help reduce the impact on the environment by recycling this product correctly. Please contact your local authority or retailer for information concerning the correct disposal of this product.



ISO13485



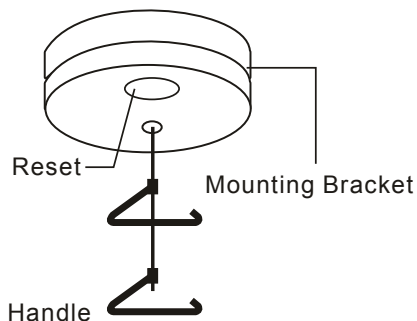
R&TTE

# Wireless Bathroom Pull Alarm

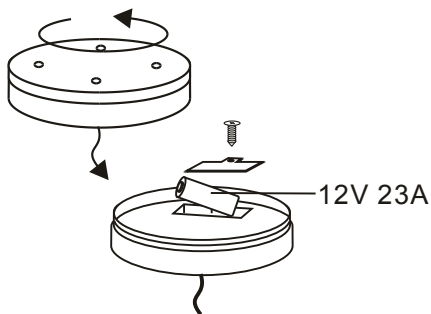
HAX-600  
LA140

## TRANSMITTER USER MANUAL

### PARTS & FUNCTION

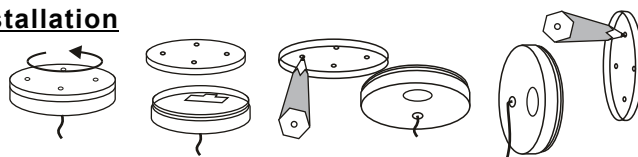


### BATTERY INSTALLATION

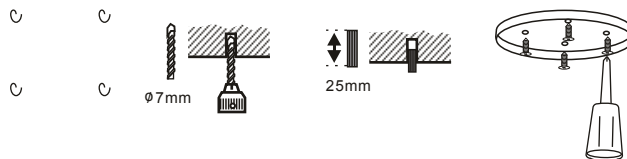


### Installation

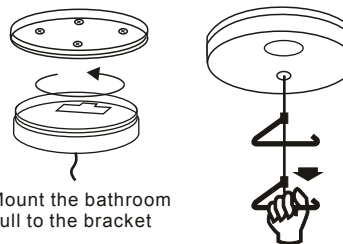
Open the mounting Bracket



Mark the four mounting holes on the ceiling or on the wall



Mount the bathroom pull to the bracket



### Test the unit:

Pull the handle once, the receiver will sound, white LED will flash. The Zone Icon on the receiver will keep "on" until the reset on the receiver or bathroom pull have been press

### Code Conflict

If the bathroom pull alert coding is same of another transmitter. You must change the code of the bathroom pull.

1. Open the cover and remove the battery.
2. Press and hold the reset button, insert the battery and hold the button until the LED flashes 5 times.
3. The new code is generated.

PAROH LTD B24 9FD  
[www.paroh.co.uk](http://www.paroh.co.uk)  
Made in China



The crossed wheeled bin symbol reminds you of your obligation to help reduce the impact on the environment by recycling this product correctly. Please contact your local authority or retailer for information concerning the correct disposal of this product.



ISO13485

CE 0197

R&TTE