



OPERATING INSTRUCTIONS

SEERS™ BOBATH THERAPY COUCH

Model No.'s: ST4552, ST4562, ST4542, ST4552W, ST456W, ST4542W



SEERS™ MAT THERAPY TABLE

Model No.'s: ST5551, ST5561, ST5551W, ST5561W, ST5561L



THE QUEEN'S AWARDS
FOR ENTERPRISE
INTERNATIONAL TRADE
2013

INDEX

1. GENERAL INFORMATION – WARNINGS & CAUTIONS
2. HOW TO USE –
 - a. WHEEL SYSTEM
 - b. ADJUSTABLE FOOT
 - c. ADJUSTING THE HEIGHT OF THE COUCH
 - d. ALTERING THE BACKREST ANGLE
 - e. ADJUSTMENT OF ARMS ON PLUS HEAD SECTION
3. CLEANING INSTRUCTIONS
4. MAINTENANCE
5. WARRANTY
6. TECHNICAL DATA

SEERS BOBATH & MAT TABLE – OPERATING INSTRUCTIONS		
PAGES	ISSUE	DATE
ALL	1	28.10.2013

1. GENERAL INFORMATION.

CONGRATULATIONS on the purchase of your **SEERS MEDICAL** Product. If these operating instructions are adhered too, this product will provide many years of safe use.

IF THESE OPERATING INSTRUCTIONS ARE NOT FOLLOWED - YOUR WARRANTY COULD BE INVALID!

Always keep these Operating Instructions available for reference.

ALL User Interfaces are identified by the **DARK GREY COLOUR**.

WARNINGS!

Warnings identify potential hazards which if not followed correctly, could result in serious injury, or possibly even death!

- Ensure electric couches are not used in the presence of flammable gasses such as an anaesthetic agent.
- DO NOT EXCEED the Maximum Safe Working Load of 250 Kg (550 lbs) – which must be distributed evenly across the working surface
- Do not concentrate uneven weight on either side of the couch.
- When the plug is disconnected, this acts as a disconnect device.
- Use only accessories that have been designed or approved for use with this couch.
- Children must not play with the couch at any time.
- Adequately supervise children in the proximity of the couch.

CAUTIONS!

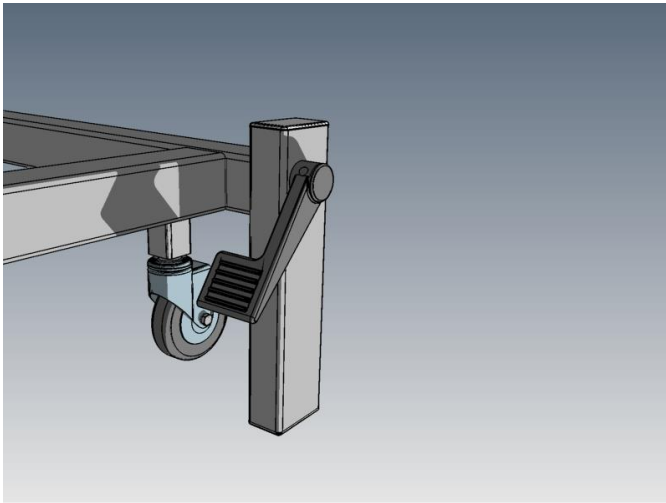
Cautions identify circumstances which if not followed correctly, could result in failure or damage of the equipment!



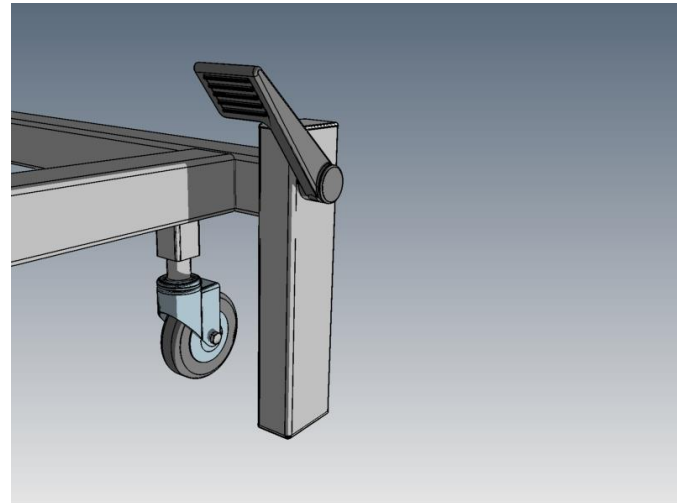
Attention refer to these Operating Instructions for further information

2. HOW TO USE.

a. WHEEL SYSTEM



Lever Down = Wheels ACTIVATED and **ON**



Lever Up = Wheels RETRACTED and **OFF**

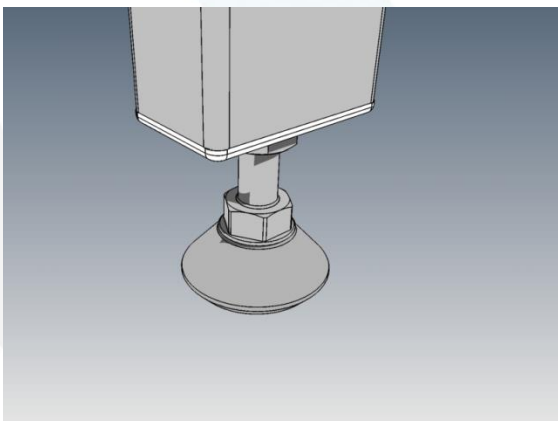
WARNING!

This Couch is not designed for patient transportation

Ensure Wheels are retracted prior to patient transfer or treatment.

Disconnect the electric lead prior to re-locating the couch, ensuring the lead is not trapped in the mechanism.

b. ADJUSTABLE FOOT



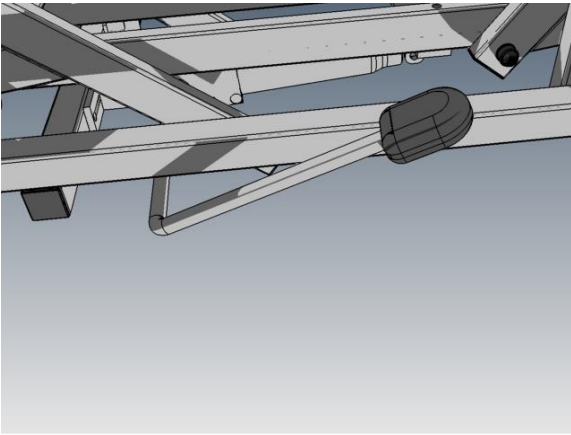
CAUTION!

Ensure Wheels are retracted before adjusting the adjustable foot.

1. Ensure the couch is **off** of the wheels
2. Adjust the foot by turning clockwise or anticlockwise until the couch is stable.
3. Secure the foot by tightening the nut until it locks against the threaded cap.

c. **ADJUSTING THE HEIGHT OF THE COUCH**

Hydraulic Elevation (model's ST4552, ST4552W, ST5551, ST5551W)



1. To elevate the couch, push the pedal downwards with your foot. Repeat until correct height is achieved.
2. To lower couch, raise the pedal upwards, by putting your toe underneath the lever, lifting the lever upwards.

Electric Elevation (model's ST45627, ST4562W, ST5561, ST5561W, ST5561L)

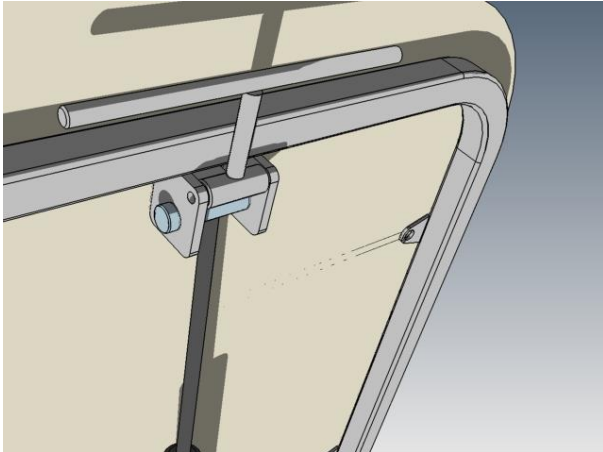


1 Way Hand Switch



1 Way Foot Switch

d. **ALTERING THE BACK REST ANGLE (BOBATH MODEL's ONLY)**



1. To raise the backrest or foot section, simply grasp the release lever towards the upholstery and adjust the backrest to the angle desired.
2. Releasing the lever automatically locks the section at that angle.
3. To lower, grasp the lever again, and lower the backrest or foot section to the required angle.
4. Releasing the lever automatically locks the section.

(BOBATH WITH ELECTRIC BACKREST MODEL ONLY)



2 Way Hand Switch

To adjust the height of the couch, simply press the M1 raise or lower button, until desired height is achieved. Once the button is released the couch height is locked in that position ready for use.

To adjust the backrest of the couch, simply press the M2 button to raise or lower of the backrest until desired position is achieved. Once the button is released the backrest is locked in that position ready for use.

3. CLEANING INSTRUCTIONS

WARNING!

Disconnect the couch from the mains power supply prior to carrying out any cleaning or decontaminating.

DO NOT SATURATE PRODUCT

IF PRODUCT GETS SATURATED DURING CLEANING, THIS COULD ACCELERATE CORROSION, REDUCING PRODUCTS LENGTH OF SERVICE.

General Cleaning:

To get rid of any dust or marks on the surface the Faux Leather **MUST** be wiped **DAILY** with a moist soft cotton cloth. Visible and loose dirt can be picked up with a vacuum cleaner (Do not use a brush type vacuum) Use a soapy cotton cloth and gently rub stains with circular movements.

For more stubborn marks a dilute bleach solution can be used 5% Bleach to 95% Water.

Stain Removal:

Blot excess liquid as quickly as possible with a clean 100% cotton white absorbent cloth or sponge. If necessary use clean warm water. Clean the entire area where the spot occurred on the cushion, arm etc. Water may dissolve dirt particles and make cleaning easier. Spills that are still moist are the easiest to remove. Leave to air dry naturally, do not use a hair dryer etc to speed up the drying.

Coffee, tea etc spills: Use an absorbent white cloth or piece of paper. **DO NOT RUB.** Allow the stain to be absorbed and removed from the material surface. Then rub gently with white tissue paper in circular movements to remove any remaining dampness and residue.

Ink, Ball point pen, Denim, hard stains: Rub the stain by means of gentle circular movements with tissue dampened with 96°alcohol and water (1:1) After this rub the surface with gentle circular movement with tissue paper to dry it.

Butter, oil, grease stains: Wipe excess butter, oil or grease off the surface with a clean 100% Cotton white dry cloth. Use a soapy cotton cloth and gently rub the stain with circular movements. Use a clean damp cloth to wipe the area and dry the surface.

Chewing gum: Place ice cubes in a plastic bag and apply on the chewing gum. Wait several minutes, lift the ice bag and remove the chewing gum.

DO NOT USE CHEMICALS, SADDLE SOAP, CLEANING SOLVENTS, FURNITURE POLISH, OILS, VARNISH, ABRASIVE CLEANERS OR AMMONIA IN WATER.

Frequency of routine couch cleaning will depend on exact application.

1. Ensure the couch is in a suitable area for cleaning.
2. The couch must be OFF of the wheels.
3. Disconnect from mains power supply if electric model.
4. Control handsets can be wiped over using an alcohol wipe.
5. Prepare a solution from the guidelines detailed above.
6. DO NOT SATURATE PRODUCT – This should be a wipe down – not a soaking!
7. Start by cleaning the top surface of the couch, working down onto the frames below, ensuring to not accidentally activate any of the release levers, or user interface parts.
8. Ensure the couch is dry before re-use.
9. Safely discard of cleaning materials.
10. Wash hands thoroughly.

If *DECONTAMINATING* the couch then repeat steps above using a dilute Hypochlorite & warm water mixture (mixed at 10,000ppm) instead of warm water and soap.

It is crucial that any staining is treated as soon as possible but never later than 24 hours. Delays in cleaning will give stains time to react with the plasticiser in the faux leather making it more and more difficult to remove.

Note: These are recommended or suggested methods of cleaning. The manufacturer is not responsible for damage incurred while cleaning. Always try the cleaning method in a hidden area first to see the results.

Remember if you are not sure contact your customer representative before proceeding.

4. MAINTENANCE

WARNING!

Disconnect the couch from the mains power supply prior to carrying out any maintenance.

All electrical maintenance should be performed by a suitably qualified person.

BLUE or BROWN wires must not be connected to any earth terminal.

1. A visual inspection should be carried out daily prior to use.
2. Regular servicing should be carried out a minimum of every six months or more frequently if the couch is in constant use.
3. Routine servicing or repair must only be performed by suitably qualified people.
4. Look for any visual signs of damage. Ensure all nuts, bolts and other fasteners are present and fitted where expected. If loose (can be undone by hand), re- tighten using suitable tools – but taking care to not over tighten as this could cause binding, juddering, identifiable by a likely noise.
5. Upholstery fixings should be checked regularly and tightened if loose. DO NOT USE PRODUCT IF ANY UPHOLSTERY FIXING SCREWS ARE MISSING!
6. Check hinge pins are secured correctly by the e clips. IF THESE ARE MISSING DO NOT USE COUCH!
7. Check gas struts operate smoothly and correctly throughout all ranges of movement. The upholstered section should lock once the release lever is no longer operated.
8. Check hydraulic pump (hydraulic variant only) for smooth operation and any signs of leakage.

ELECTRIC MODELS ONLY

9. On electric models ,check the power cable and air pipes on hand and foot switch controls, looking for any cuts, abrasions or any other deterioration that may have occurred and replace if necessary.
10. Ensure that the mains power supply plug is attached securely to the motor.

11. Check mains plug connections are tight and the correct fuse is fitted.

5. WARRANTY

SEERS MEDICAL Limited standard terms and conditions apply to this device.

A copy of this is available upon request. This contains full details of warranty terms and does not affect your statutory rights.

For any further information on this product, regarding spares, warranty, service or maintenance information, please contact:




SEERS MEDICAL Limited
Kenton Road
Debenham
Suffolk
IP14 6LA
T: +44 (0)1728 861590
F: +44 (0)1728 861868
E: info@seersmedical.com
W: www.seersmedical.com



© **SEERS MEDICAL** Limited

Manufactured in the UK by **SEERS MEDICAL** Limited.





As part of our ongoing development programme **SEERS MEDICAL** Limited reserves the right to alter or modify specifications and materials without prior notice.

6. TECHNICAL DATA (MAT TABLES)

Index	ST5551	ST5561	ST5551W	ST5561W	ST5561L
Configuration					
Elevation Control	Hydraulic	Electric	Hydraulic	Electric	Electric
Overall Length (cm)	196				205
Width (cm)	105		125		150
Minimum Height (cm)	43				
Maximum Height (cm)	98				
Safe Working Load & Lifting Capacity	250 Kg (550lbs)				

Electrical Data		
	230 v	115 v
Actuator	220-240v	100-120v
Current	24V	24V
Power	600mA	1300mA
Mains Plug Fuse Rt (UK)	5.0A x 1	-
IEC 601-1 Classification	 Double Insulated	Class 1 Earthed
Class	Class 1	Class 1
Type B Equipment		

TECHNICAL DATA (BOBATH COUCH)

Index	ST4552	ST4562	ST4552W	ST4562W	ST4542	ST4542W
Configuration						
Elevation Control	Hydraulic	Electric	Hydraulic	Electric	Electric + Electric backrest	Electric + Electric backrest
Overall Length (cm)	200		200		200	
Head Length (cm)	64		64		64	
Foot Section Length (cm)	135					
Width (cm)	105		125		105	125
Minimum Height (cm)	43					
Maximum Height (cm)	98					
Safe Working Load & Lifting Capacity	250 Kg (550lbs)					
Electrical Data						
	230 v			115 v		
Actuator	220-240v			100-120v		
Current	24V			24V		
Power	600mA			1300mA		
Mains Plug Fuse Rt (UK)	5.0A x 1			-		
IEC 601-1 Classification	 Double Insulated			Class 1 Earthed		
Class	Class 1			Class 1		



SEERS MEDICAL Limited

Kenton Road
Debenham
Suffolk
IP14 6LA

t: +44 (0)1728 861590

f: +44 (0)1728 861868

e: info@seersmedical.com

w: www.seersmedical.com

© **SEERS MEDICAL Limited**



The **CE** mark on this product demonstrates conformity with the Medical Device Directive 93/42/EEC.